



HAZARDOUS LOCATION LOW BAY

Engineered, tested, and certified to withstand the most extreme application environments, the Horner Circular Hazardous Location Low Bay Series is efficient, powerful, and durable. The Circular Hazardous Location Low Bay (HLB) Series is built to resist corrosion, extreme vibration, dust, dirt, moisture, wind, snow, water, and high ambient temperatures. The HLB is Certified for locations where flammable vapors, combustible dusts, and gases (as outlined by NEC standards) may be present. The HLB's aluminum alloy housing is copper-free and corrosion-resistant, saving you maintenance time and money.

LONG LIFETIME

- Premium, top-tier LEDs
- 5 year warranty backed by U.S. company founded in 1949
- 150,000+ hr lifetime
- Quality driver with integrated 4 kV surge
- -40°C to 50°C ambient temperature ensures long lifetime in a variety of conditions
- Superior LED thermal management ensures long lifetime

BRIGHT SAVINGS

- Reduce downtime and minimize maintenance costs
- Potential for rebate savings through DLC certifications (refer to DLC QPL at www.designlights.org)
- 150 Lumens/watt

FULL CIRCLE DESIGN

- Output of 9,750 lumens
- Engineered with quality, space-age materials
- Variety of options for surface, conduit, and bracket mounting
- IP66 Dust and Water protection
UL wet-rated
- Extensive certifications: UL844 for Hazardous Area; Class I Division 2, Group A, B, C, D; Class II Division 1, Group E, F, G; Class II Division 2, Group F, G; Class III Division 1; UL1598A Marine Outside Type (Salt Water); DLC 4.0 Premium
- Atmospheric pressure: 12.5 - 15.4 psi

ILLUMINATING RESULTS

- 80 CRI standard enhances color and clarity
- 110° beam angle standard
- Typical mounting heights of 8' - 12'

POSSIBLE APPLICATIONS

- Industrial storage
- Oil and gas refineries
- Chem. processing centers
- Wastewater
- Paper/textile mills
- Loading docs/shipyards
- Mining sites
- Foundries
- Grain mills/ag. facilities

MODEL/SKU	WEIGHT	DIMENSIONS	CRI	CCT	LUMENS	WATTS	Lm/W	L70
Class I Div. 2 (HLB), Groups A, B, C, D; Class II Div. 1, Groups E, F, G; Class II Div. 2, Groups F, G; Class III Div. 1								
ETG-HLB-C1D2-WL850-65W-B1 NJZ-FEL-D-65-U*	11 lbs.	10.3" diam x 6.1" h	70	5000K	9,750	65	150	>150,000 hrs
ETG-HLB-C1D2-WL850-65W-B NJZ-FEL-D-65-T*								

*DLC qualified
** Requires a mount below

COMPARE TO

Existing Fixture	Hazardous Location Replacement
250W HPS/MH	65 (max energy savings*)

*replaces a depreciated light source with similar performance while maximizing energy savings
**based on 12 hour daily usage, \$0.10 per kwh per year

YOUR PART NUMBER

CRI/CCT wattage mount power

ETG-HLB-C1D2-WL - W- B - P

850 (80 CRI, 5000K) 65 (65W) B1 (standard)
B (option) P1 (standard 120-277VAC)
P2 (option 347-480VAC)

HLB MOUNTING OPTIONS:



3/4" Conduit with Bracket - Standard
ETG-HLB-C1D2-WL850-65W-B1



Mount B
ETG-HLB-C1D2-WL850-65W-B
(needed for all non-standard mount options)



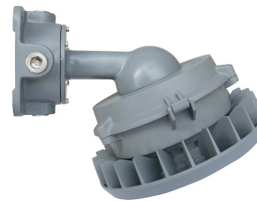
Ceiling
ETG-HLB-C1D2-WL850-65W-B
with ETG-BKT-HLB-B30



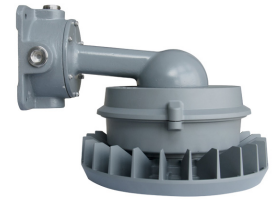
1 1/4" Stanchion 25°
ETG-HLB-C1D2-WL850-65W-B
with ETG-BKT-HLB-B32



1 1/4" Stanchion 90°
ETG-HLB-C1D2-WL850-65W-B
with ETG-BKT-HLB-B33



Wall 25°
ETG-HLB-C1D2-WL850-65W-B
with ETG-BKT-HLB-B34



Wall 90°
ETG-HLB-C1D2-WL850-65W-B
with ETG-BKT-HLB-B35



Dome and Wire Guard
ETG-HLB-DOME
Option includes Lens and Wire Guard



25° Glare Shield
ETG-HLB-SHD*
*minimum order is required