

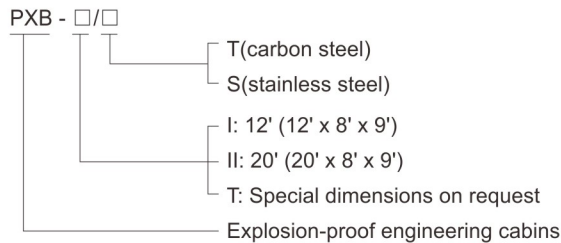
Engineering Cabins

PXB Series Explosion-proof Engineering Cabins



- ◆ Explosion protection to
 - CENELEC
 - IEC
- ◆ Can be used in
 - Zone 1 and Zone 2
 - Zone 21 and Zone 22
- ◆ Enclosure in carbon steel or stainless steel
- ◆ The explosion-proof control box is the standard control box or PLC programmed control box. Combustible gas detector and toxic gas detector are modular designed. The thermal detector, smoking detector, and pressure transmitter are intrinsic safety explosion-proof components. The power of explosion-proof centrifugal fan is subject to the room size. The type of explosion-proof air conditioner is subject to the room size. With audio and visual alarm interlock system. Illumination system is the explosion-proof fluorescent lamp. The light source of explosion-proof emergency lamp is LED.

■ Catalogue number logic



- ◆ This product is welded by steel structure.
- ◆ A60 Zone I Rated.
- ◆ DNV 2.7-1, 2.7-2 Rated Structure.
- ◆ Protected with fire detection.
- ◆ Gas detection system.
- ◆ Fitted with dedicated air conditioning system.
- ◆ With continuous clean gas filled; keep the internal air fresh and safe.
- ◆ Automatic fire dampers (fail safe).
- ◆ Equipped with fire extinguishers.
- ◆ Two airtight doors, equipped with viewing window and emergency exit.
- ◆ Special requirement on request.



Zones 1&2; 21&22

Engineering Cabins

PXB Series Explosion-proof Engineering Cabins

Technical data

Explosion-proof engineering cabins (Ex px IIB)

PXB-□/□□

Explosion protection

Global (IECEX)

Gas and dust

IECEX CQM 14.0009X

Ex px II B T4 Gb

Ex px III C T130°C Db

Europe (ATEX)

Gas and dust

ATEX (applied for)

Ex II 2 G Ex px II B T4 Gb

Ex II 2 D Ex px III C T130°C Db

Certificates

IECEX; ATEX

Conformity to standards

EN 60079-0, EN 60079-13

IEC 60079-0, IEC 60079-13

Normal operating pressure

50Pa~100Pa(0.0005bar~0.001bar)

Air pressure

0.4MPa~0.8MPa(4bar~8bar)

Rated voltage of user system

220V/380V/400V/440V/460V/660V/690V AC

Rated voltage of pressurized control system

220V/380V AC 50/60Hz

Rated current of pressurized control system

10A

Enclosure material

Powder coated carbon steel or stainless steel

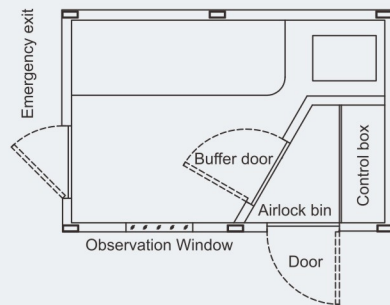
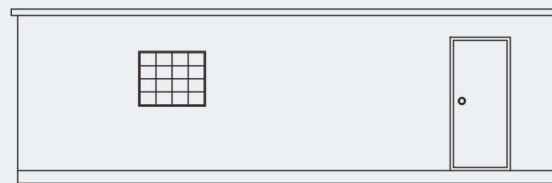
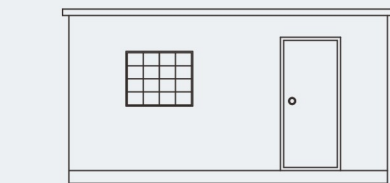
Degree of protection

IP66

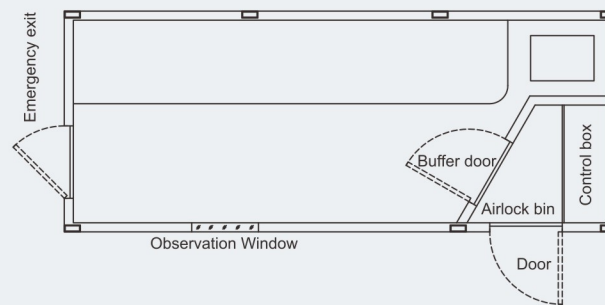
Ambient temperature

-20℃~+55℃

Dimension drawings (all dimensions in mm) - subject to alteration



PXB-I (12' x 8' x 9')



PXB-II (20' x 8' x 9')

