

# LED Explosion-proof Light

## EP-02-G1



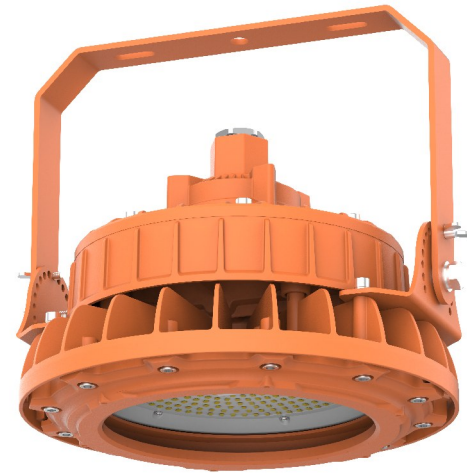
### Better solutions for LED Explosion-proof Light

-  **IP66 water-proof**
-  **AC100-277V 50/60Hz**
-  **Easy Installation**
-  **140lm/W**

**Operating Temp.:** -40°C ~ +50°C     **Storage Temp.:** -40°C ~ +80°C

### Options

Driver	Housing Color	CCT
Sosen Driver	Grey	3000K
	Orange	4000K
		5000K
		5700K



## CLASSIFICATIONS & RATINGS

- Class I, Division 1, Groups C, D
- Class I, Division 2, Groups A, B, C, D
- Class II, Division 2, Groups E, F, G
- Class III
- Zone 1, Group IIC
- Zone 2, Group IIC
- Zone 21, Group IIIC
- Zone 22, Group IIIC



**II 2G Ex db IIC T6 Gb**  
**II 2D Ex tb IIIC T80°C Db IP66**

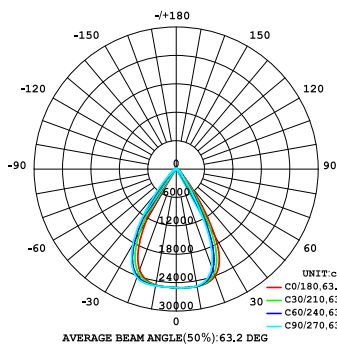
## Application

The Explosion Proof Light can be widely used in Refineries, Fuel depots, Marine vessels, Chemical production processing, Food processing, Wineries, and other high humidity, high temperature dusty places.

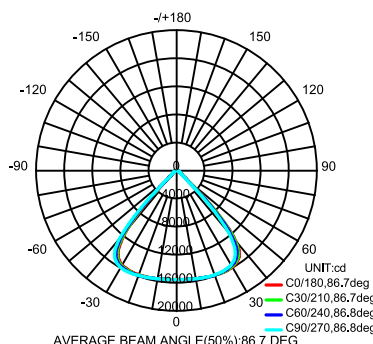
## Specifications

Item	Power	Effi.	Leds	CRI	Weight	Beam Angle
EP30W-02-G1	30W	140lm/W	Lumileds	>80	6.95kg(15.32lbs)	60°/90°/120°
EP50W-02-G1	50W	140lm/W	Lumileds	>80	6.95kg(15.32lbs)	60°/90°/120°
EP60W-02-G1	60W	140lm/W	Lumileds	>80	7.15kg(15.76lbs)	60°/90°/120°
EP80W-02-G1	80W	140lm/W	Lumileds	>80	7.15kg(15.76lbs)	60°/90°/120°
EP100W-02-G1	100W	140lm/W	Lumileds	>80	7.20kg(15.87lbs)	60°/90°/120°

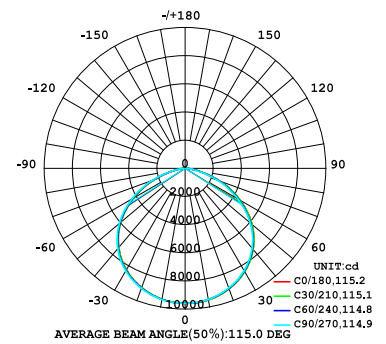
## Photometry



60° (Optional)



90° (Optional)



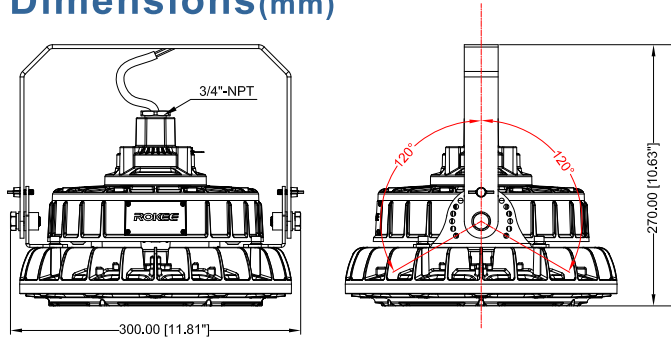
120° (Standard)



# EP-02-G1

LED Explosion-proof Light

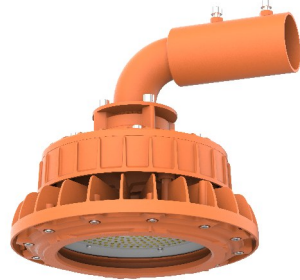
## Dimensions(mm)



## Model Options



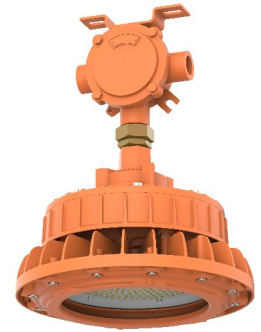
P1



P2

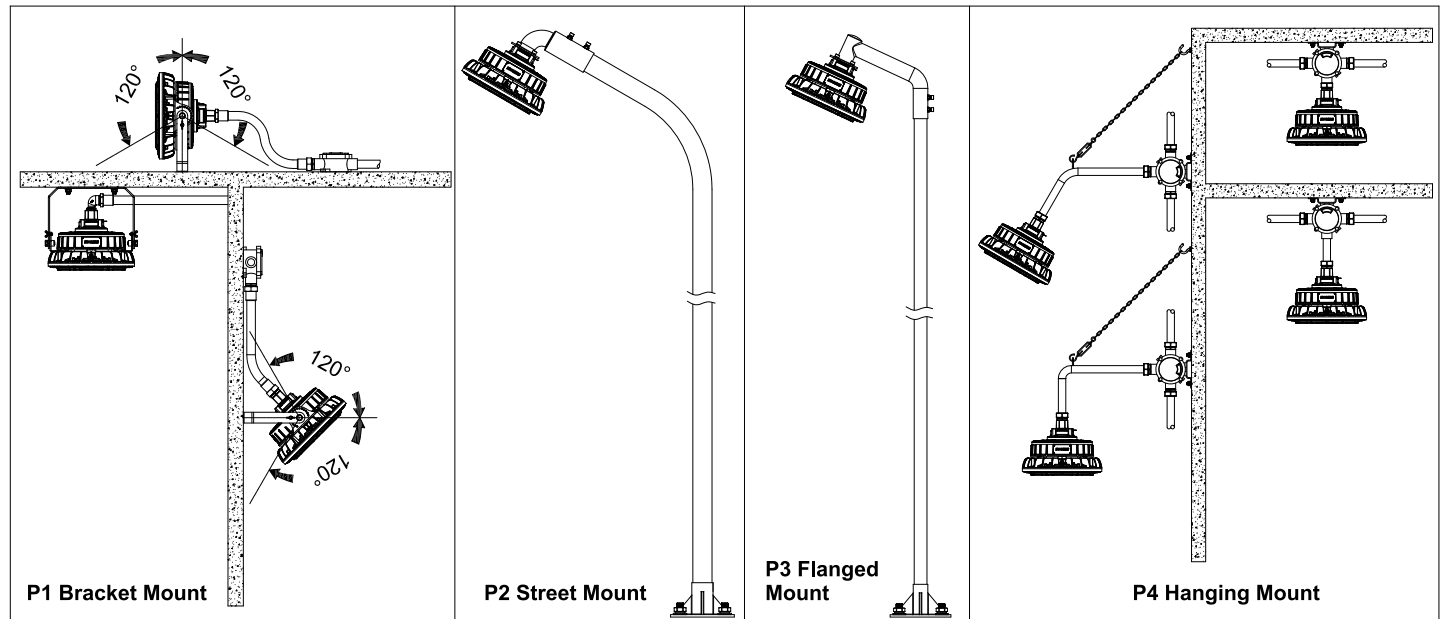


P3



P4

## Installation and use



## Packing Spec

Item	Box			Carton		
	Measurement(mm)	Gross weight	Pcs/box	Measurement(mm)	Gross weight	Pcs/box
EP30W~100W-02-G1-P1	L380*W350*H275	8.50kg(18.7lbs)	1	/	/	/