

Barrel™ GELT series linear luminaire with LED tube is designed with the type of protection "Ex d" and "Ex de". Marine grade copper free aluminium (control gear & lamp body) high-temperature resistant polycarbonate tube ideal solution for many hazardous, high vibration, and corrosive environments.

### Compliance



II 2G Ex db eb IIC T6 Gb  
II 2D Ex tb IIIC T80°C Db



Ex db eb IIC T6 Gb  
Ex tb IIIC T80°C Db

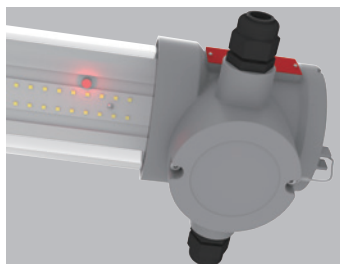
Zone 1,2 , Zone 21,22  
CE EMC/LVD/EMF EN62471  
IP67  
IK10  
5G vibration

### Features

- UV resistant polycarbonate IK10 for extreme durability.
- Robust Ex-d housing
- 157mm fixture height, low profile and light weight
- 2 models from 3,200 to 9,600 lumens with 160Lm/W.
- 90 minute minimum run time in emergency mode.
- Ex eb compartment provides quick access to terminals.
- Resistant to shock and vibration
- High degree of protection IP67
- Easy connection to wire and disconnect with plug-in terminal blocks

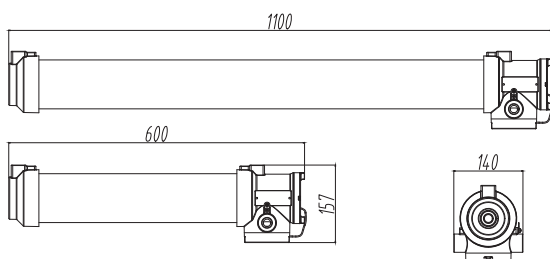
### Emergency

90 minute minimum run time at 1500 lumens in emergency mode.



### Dimensions

Dimensions in millimeters (mm)



### Technical Data

#### Electric

Rated Power	20W / 30W / 50W / 60W
Input Voltage	100-240VAC
Input Frequency	50/60Hz
Power Factor	> 0.95
Driver Efficiency	≥ 90%
DC output Ripple & Noise	<200mVP-P

#### Emergency

Emergency power	15W
Input Voltage	AC100-240VAC
Recharging time	24 hours
Rated autonomy	90 min

#### Optical

Lumen Output	3,200lm / 4,800lm 8,000lm / 9,600lm
Luminous Efficacy (Lumens per Watt)	160Lm/W
Beam Angle	110°
Correlated Color Temperature (CCT)	2700K/3000K/4000K/5000K
CRI	Ra>70

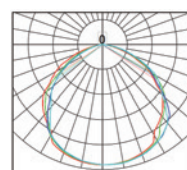
#### Environmental

Ambient Operating Temperature	-20°C ~ +55°C 0°C ~ +50°C (Emergency)
Ambient Operating Humidity	10%~90% RH

#### Technical

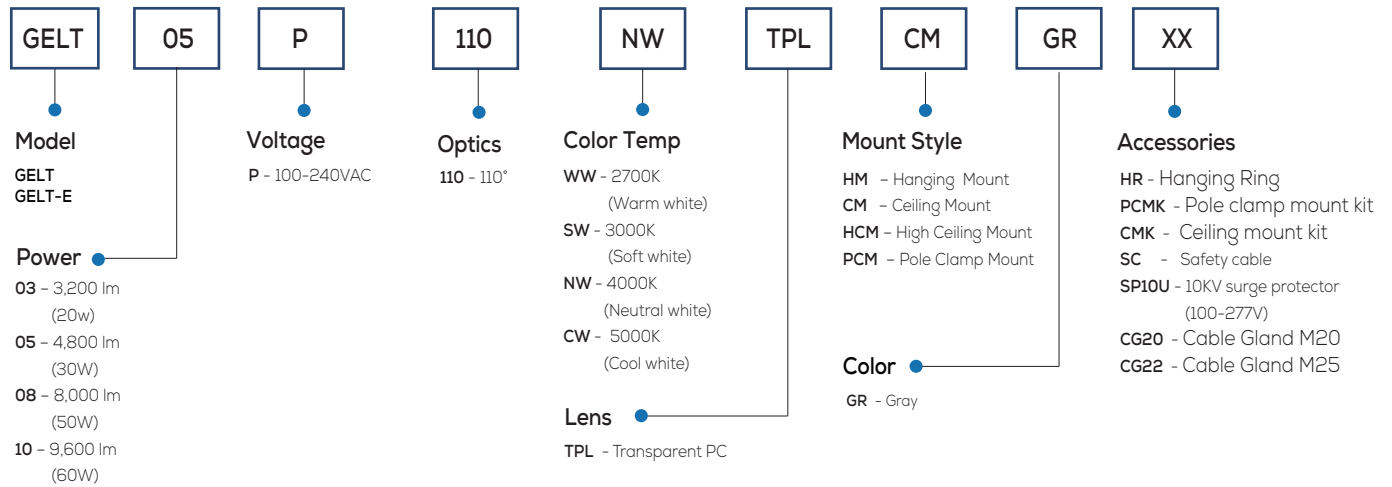
Lens Material	Polycarbonate
Mounting Options	Hanging, Ceiling, Pole
Cable Entries	M20, M25, 3/4" NPT
Net Weight	6 kg / 4.5kg
Warranty	5-year limited system warranty L70:150,000 hours@ 55°C

### Beam Distribution



110°

Ordering Information and Mounting Accessories



Mounting Options



HM  
Hanging Mount



CM  
Ceiling mount



HCM  
High ceiling mount



PCM  
Pole Clamp Mount

Accessories



HR  
Hanging Ring  
M12 eyebolt  
1 pair



PCMK  
Pole Clamp Mount Kit  
1 pair



CMK  
Ceiling mount kit  
1 pair



HCMK  
High Ceiling mount kit  
1 pair



SC2  
Stainless steel  
safety cable



CG20  
Cable Gland M20  
CG25  
Cable Gland M25



SP10U  
10KV Surge Protector  
10KV (100-277V)