

GHW wall pack lighting meet certain requirements to ensure safe operation In hazardous areas . These areas are classified as locations where flammable gases, vapors, or dusts are present in sufficient quantities to create a risk of explosion or fire.

Compliance

NEC/CEC Standard

UL 844 Hazardous Locations
 Class I Division 2, Group A, B, C, D
 Class II Division 1, Group E, F, G
 Class II Division 2, Group F, G
 Class III
 Class I, Zone 2, Group IIC
 Zone 21
 Zone 22
 Simultaneous Presence

UL 1598 Wet Locations

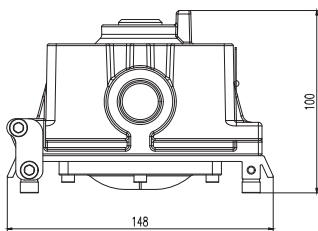
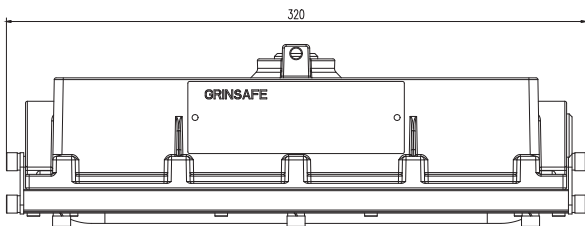
UL 1598A Marine Outside Type (Salt Water)
 UL 8750 LED Safety
 CSA C22.2 No.137-M1981
 CSA C22.2 NO. 250.0

Warranty

5-year limited system warranty
 Lumen Maintenance:150,000hours@L70

Dimensions

Dimensions in millimeters (mm)



Technical Data

Electric

Rated Power	20W / 30W
Input Voltage	AC100-277V
Input Frequency	50/60Hz
Power Factor	> 0.95
Driver Efficiency	≥ 90%
DC output Ripple & Noise	< 200mVP-P

Optical

Lumen Output	3,400lm / 5,100lm
Luminous Efficacy (Lumens per Watt)	170Lm/W
Beam Angle	115°
Correlated Color Temperature (CCT)	Amber 2700K 3000K 4000K 5000K
CRI	Ra>70

Environmental

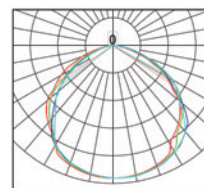
Ambient Operating Temperature	-40°C~+65°C
Ambient Operating Humidity	10%~90% RH
Atmospheric pressure	86~106KPa

Technical

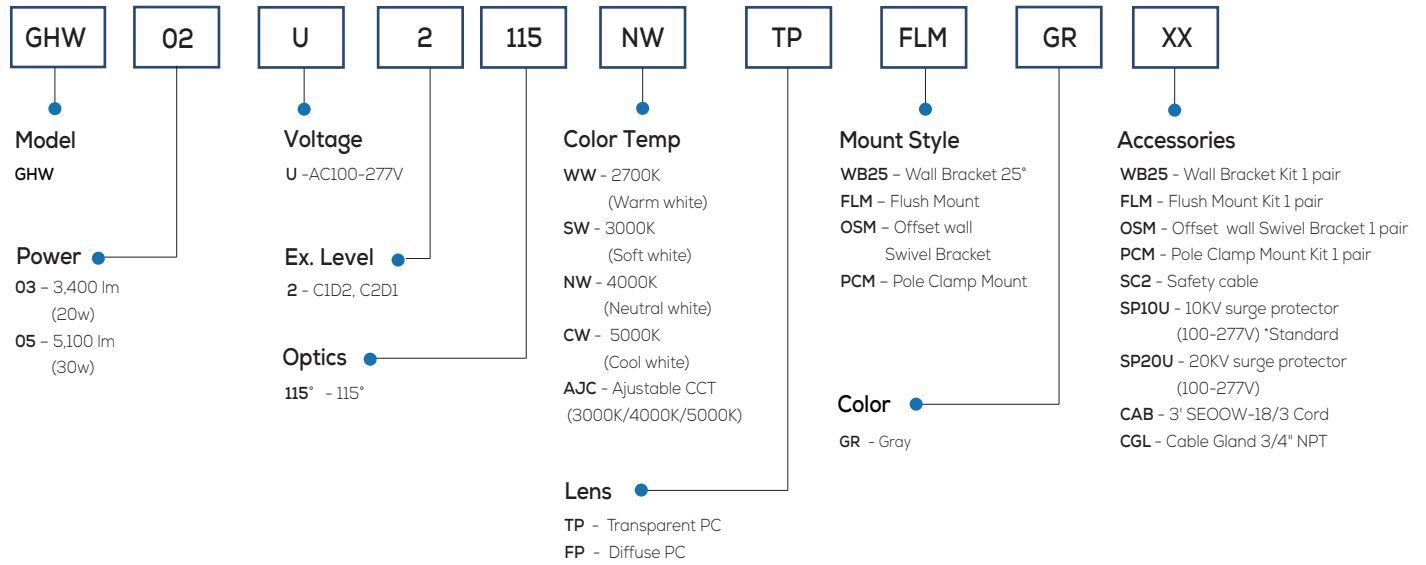
Lens Material	Transparent PC / Diffuse PC
Mounting Options	Wall mount
Cable Entry	3/4" NPT
Net Weight	2.3kg

Beam Distribution

110°



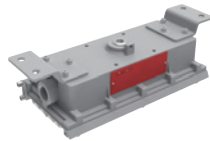
Ordering Information and Mounting Accessories



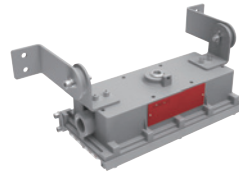
Mounting Options



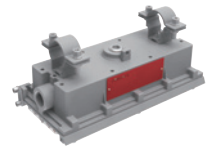
WB25
Wall Swivel Bracket 25°



FLM
Flush mount



OSM
Offset ceiling / wall Swivel Bracket



PCM
Pole Clamp Mount

Accessories



WB25
Wall Bracket Mount Kit 1 pair



FLM
Flush Mount Kit 1 pair



OSM
Offset ceiling / wall Swivel Bracket 1



PCM
Pole Clamp Mount Kits 1 pair



SC2
Stainless steel safety cable



CAB
3' SE00W-18/3 Cord (Factory installed)



CGL
Cable Gland 3/4" NPT Suitable for CID2



10KV Surge Protector *Standard
SP10U
10KV (100-277V)



20KV Surge Protector
SP20U
20KV (100-277V)