



APPLIED RESOLUTION TECHNOLOGIES

Laser application technologies : Mining, Oil & Gas, Agriculture, Industrial

www.appliedresolution.com.au

BLX-635S :

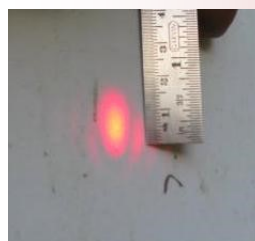
THE BEST INTRINSICALLY SAFE, EFFICIENT, IECEx CERTIFIED LASER FOR USE IN ANY HAZARDOUS ENVIRONMENTS. Replaces the LD-60IS as a modular solution that doesn't need to be removed from hazardous zones to replace batteries.



The BLX-635S is a Class 2M alignment laser system used in hazardous environments such as underground mining or conveyor alignment applications. The laser is robust enough for the toughest environment. The BLX-635S is a sensor enabled RED laser which will work with laser sensing systems.

It's visible red beam is safe to use under all conditions, and the precision alignment of the laser beam axis to the body axis allows simple and precise alignment. **Range is OVER 700 metres!!!**

EXIT BEAM
DIAMETER 20mm



For many years we have been limited to either red Intrinsically Safe lasers, or some inefficient green laser systems that use complex and unstable technologies. Now, with the release of direct green laser diodes, we are able to offer the very first Intrinsically Safe, Long Range laser product that provides a bright green beam that is visible in the air under low ambient light conditions or with dust. Safe for Mining, safe for construction. Internationally Certified to IECEx Standards. See the BLX-515S, the green sister product of the BLX-635S.

CERTIFICATION

- IECEx SIM 13.0005 Ex ia I/IIB T4
- Certified to IEC 60079.11 : 2011
- Supported by Quality Management to IEC 80079-34
- Supported by IECEx SIM S0003 Service Facility Certification
- The BLX-635S laser has a 20mm diameter exit beam, which enables up to 5mW laser power for Class 2M under IEC 60825-1.
- Meets Regulations for use in underground tunnelling and mining.

APPLICATIONS :

- Underground survey and alignment
- Tunnelling, boring
- Safe pointing, marking.
- Tunnel and excavation guidance
- Operating theatre patient alignment
- Coal Conveyor Alignment
- Mining and Industrial Automation

Specifications :

- Visible laser 635nm (RED) < 5.0mW in 20mm diameter, Class 2M
- AUTOMATION READY
- Working range > 700 m
- Conforms with Standards :
 - IEC 60079-0:2017
 - IEC 60079-11:2019
 - IEC 60825.1:2014
- 300mm long
- Beam aligned to laser body using proprietary means.
- 2 or 3 x C-Cell batteries also with removable C-cell or AA-cell IS Certified battery modules
- Electronically isolated diode laser component
- Micro laser control circuit with Auto Power Control.
- Reverse battery polarity protection and in-built fusing for intrinsic safety compliance
- Long battery life
- Simple rotary on/off switch with nylon-tipped set screw lock.
- Protective laser window head.
- Certification information engraved into the laser body for permanent label.
- Optional carry case
- Included iris adjustor for beam size
- Optional 90 and 110 degree prisms.
- FRAS approved mounting and adjustment accessory for 48mm diameter tubes and roof bolts.

Related :

- BLX-635S sensor-enabled laser
- SLX-515S sensor-enabled 1mW

AUTOMATION READY WITH MODULATION



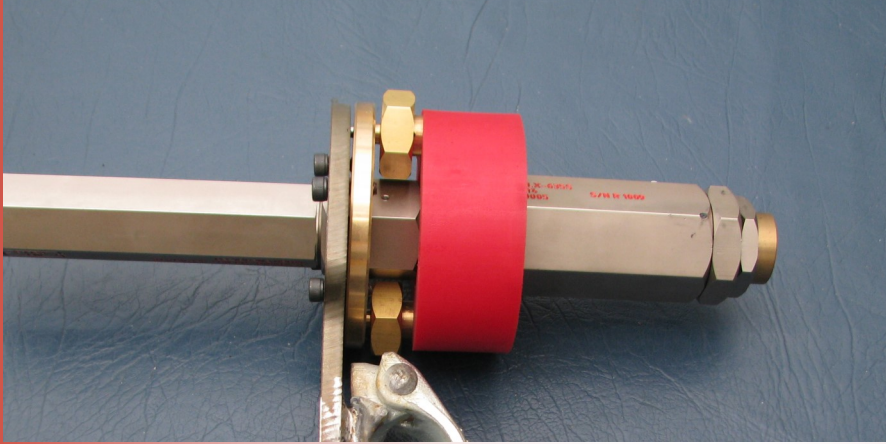
APPLIED RESOLUTION TECHNOLOGIES

Laser application technologies : Mining, Oil & Gas, Agriculture, Industrial

www.appliedresolution.com.au

BLX-635S :

THE BLX-635S LASER IS AN INTRINSICALLY SAFE, IECEx CERTIFIED LASER FOR HAZARDOUS ENVIRONMENT USE. GREAT FOR UNDERGROUND COAL MINING, SUITABLE FOR USE IN AIRCRAFT REFUELLING ZONES, AND A MUST-HAVE TOOL FOR COAL CONVEYOR TRUE ALIGNMENT.



ACCESSORIES :

- 90 AND 110 DEGREE PRISMS
- ROOF BOLT MOUNTING SYSTEM FROM M24 THREADS
- CARRY CASE
- LASER SENSOR SYSTEM (DUE LATE 2013) FOR PRECISION ALIGNMENT TO WITHIN 20MM OVER 1KM!!!!)
- NEW FRAS APPROVED MOUNTING AND ADJUSTMENT SYSTEM
- DUAL IRIS ALIGNMENT SYSTEM REPLACING DROPDOWNS

