

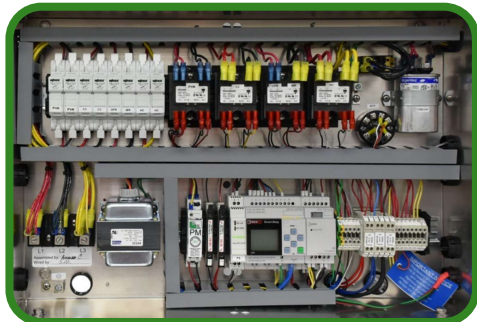
Product Description

Bebco Model WAC and WHP Wall Mount Air Conditioners and Heat Pumps provide 1 to 6 Tons of cooling and up to 20 Kilowatts of optional heating. Typical applications include analyzer shelters, control rooms, switchgear, MCC or VFD equipment rooms, battery or UPS rooms where a quantity of one or more units can work in tandem or as redundant units to provide the required cooling.

Most Bebco Model WAC and WHP Units are available with several different power options from 120 to 460 VAC, single or three phase, 50 or 60 hertz. The hazardous location Models meet or exceed all National Electrical Code requirements for use in Class I, Division 2, Group B, C & D hazardous locations.

Units may feature a commercial grade powder coated steel or industrial grade brushed stainless steel case and coated coils. These options make Bebco Model WAC Units suitable for a wide range of industrial environments, ranging from petrochemical refineries and manufacturing facilities to highly corrosive atmospheres, such as those encountered in waste water treatment plants, H₂S sour gas units and offshore oil and gas drilling platforms.

These units provide effective recirculating or fresh air cooling and heating solutions in industrial, hazardous or corrosive locations that comply with all requirements of the National Electrical Code (NEC). They can also be equipped with integrated ventilation or pressurization solutions that satisfy AP RP 500 recommendations or NFPA 496 requirements.



State of the Art Controls permit fast and easy adjustment of cooling, heat and alarm set points!

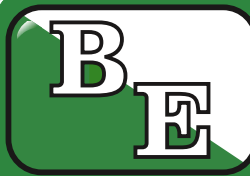
Ratings & Certifications

ETL Listed Configurations!

Please contact a Bebco Sales Associate for more details.



All Bebco Model WAC and WHP HVAC Units are ETL Listed for hazardous (classified) locations, as applied to the ETL Ordinary Location Listing carried by Bard Manufacturing. When substantially customized, these Units are available with third-party limited production certificates or self-certifications.



Model WAC & WHP Wall Mount Air Conditioners & Heat Pumps

**Unclassified to Class I, Division 2, Group B
Ratings, in 1 - 6 Ton Capacity Units**

Technical Bulletin WAC & WHP TB-R3

© 11.10.2020



*We proudly enhance
America's most reliable
and trusted brand of wall mount
air conditioners and heat pumps!*



***Single, Tandem or Redundant Units Provide
Optimal Flexibility for Your Specific Application!***



Bebco Environmental
Hazardous & Industrial Climate Control Solutions

4725 Lawndale • La Marque, Texas 77568

Phone: 1.844.EXP.HVAC • 1.844.397.4822
www.exphvac.com • sales@exphvac.com