





# LED Explosion-proof Light EP-02-G21



## Better solutions for LED Explosion-proof Light

-  **IP66 water-proof**
-  **AC120-277V 50/60Hz**
-  **Easy Installation**
-  **140lm/W**
- Operating Temp.:** -40°C ~+50°C
- Storage Temp.:** -40°C ~+80°C

### Options

<b>Driver</b>	<b>Housing Color</b>	<b>CCT</b>
Sosen Driver	Yellow	3000K 4000K 5000K 5700K

## CLASSIFICATIONS & RATINGS

- Class I , Division 2 , Groups A , B , C , D
- Class II , Division 2 , Groups E , F , G
- Class III , Division 2
- Zone 2,Group IIC
- Zone 22,Group IIIC

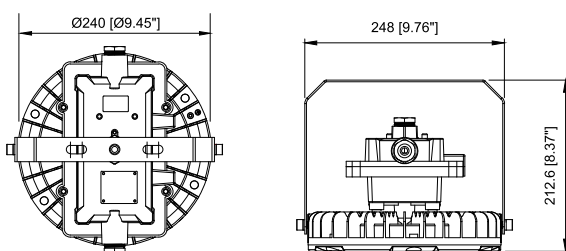
## Application

The Explosion Proof Light can be widely used in Refineries,Fuel depots,Marine vessels,Chemical production processing,Food processing,Wineries, and otherhigh humidity,high temperature dusty places.

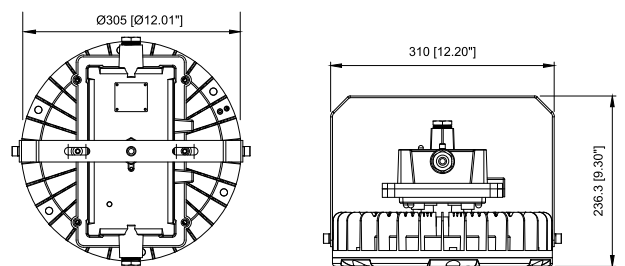
## Specifications

Item	Power	Effi.	Leds	CRI	Weight	Beam Angle
EP30W-02-G21	30W	140lm/W	SMD 3030	>80	4.0kg(8.8lbs)	120°
EP50W-02-G21	50W	140lm/W	SMD 3030	>80	4.0kg(8.8lbs)	120°
EP80W-02-G21	80W	140lm/W	SMD 3030	>80	4.0kg(8.8lbs)	120°
EP100W-02-G21	100W	140lm/W	SMD 3030	>80	4.0kg(8.8lbs)	120°
EP120W-02-G21	120W	140lm/W	SMD 3030	>80	6.7kg(14.8lbs)	120°
EP150W-02-G21	150W	140lm/W	SMD 3030	>80	6.7kg(14.8lbs)	120°
EP180W-02-G21	180W	140lm/W	SMD 3030	>80	6.7kg(14.8lbs)	120°
EP200W-02-G21	200W	140lm/W	SMD 3030	>80	6.7kg(14.8lbs)	120°

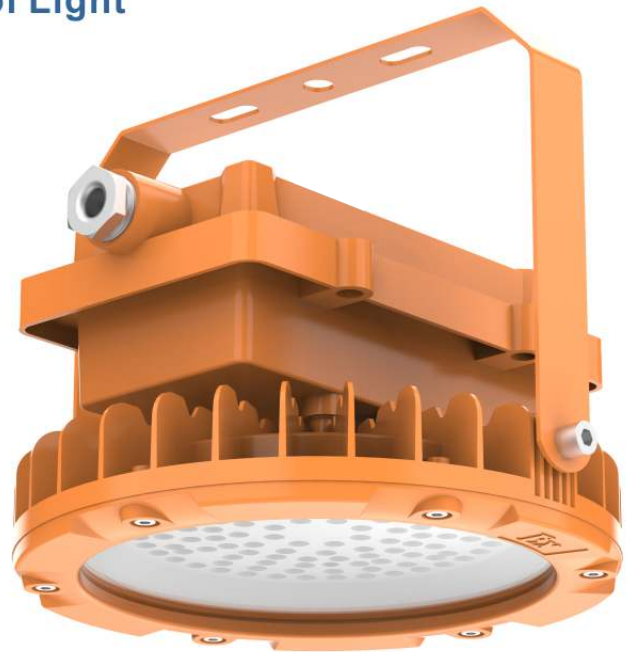
## Dimensions(mm)



30W~100W

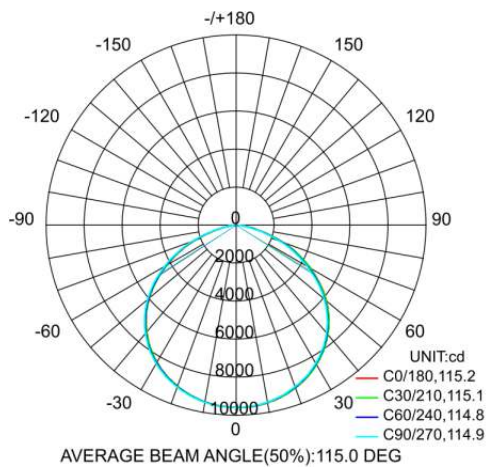


120W~200W



# EP-02-G21 LED Explosion-proof Light

## Photometry



120°

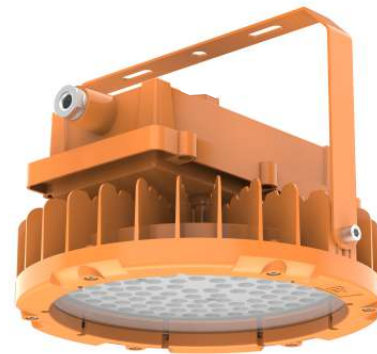


120°

## Model Options



30W~100W



120W~200W

## Installation and use

**1**

Power	L1	D1
100W	95mm	12mm
200W	150mm	12mm

**2**

**3**

Brown(Black) --- L  
Blue(White) --- N  
Green/Yellow --- GND

## Packing Spec

Item	Box			Carton		
	Measurement(mm)	Gross weight	Pcs/box	Measurement(mm)	Gross weight	Pcs/box
EP30W~100W-02-G21	L355*W295*H210	4.5kg(9.9lbs)	1	L370*W310*H440	9.7kg(21.4lbs)	2
EP120W~200W-02-G21	L395*W355*H245	7.3kg(16.1lbs)	1	L410*W370*H510	15.5kg(34.2lbs)	2