

LED Explosion-proof Light EP-02-G25

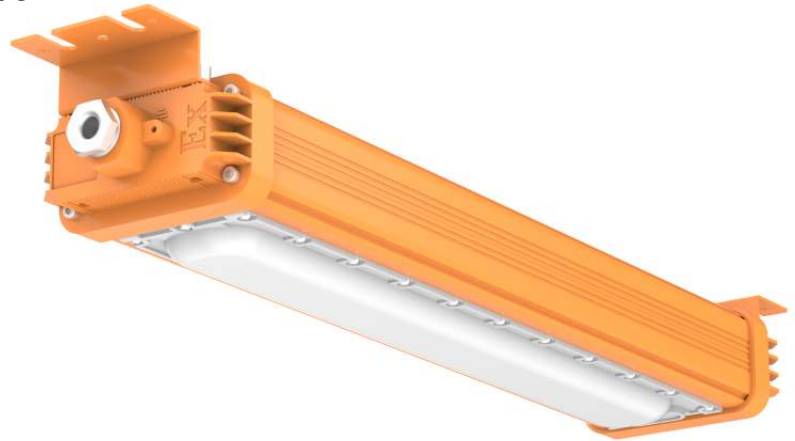


Better solutions for LED Explosion-proof Light

IP66 water-proof **AC120-277V 50/60Hz**
Easy Installation **125lm/W**
Operating Temp.: -40°C ~+50°C **Storage Temp.:** -40°C ~+80°C

Options

Driver	Housing Color	CCT
Sosen Driver	Yellow	3000K 4000K 5000K 5700K



CLASSIFICATIONS & RATINGS

- Class I , Division 2 , Groups A , B , C , D
- Class II , Division 2 , Groups E , F , G
- Class III , Division 2
- Zone 2,Group IIC
- Zone 22,Group IIIC

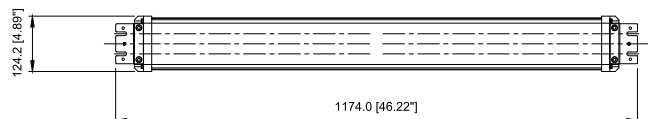
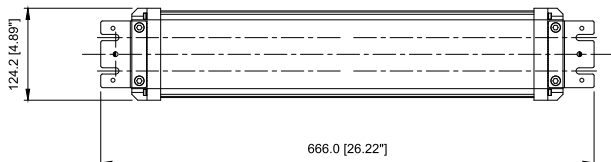
Application

The Explosion Proof Light can be widely used in Refineries,Fuel depots,Marine vessels,Chemical production processing,Food processing,Wineries, and other high humidity,high temperature dusty places.

Specifications

Item	Power	Effi.	Leds	CRI	Weight	Beam Angle
EP30W-02-G25	30W	125lm/W	Lumileds	>80	3.0kg(6.6lbs)	120°
EP50W-02-G25	50W	125lm/W	Lumileds	>80	3.0kg(6.6lbs)	120°
EP80W-02-G25	80W	125lm/W	Lumileds	>80	4.3kg(9.5lbs)	120°
EP100W-02-G25	100W	125lm/W	Lumileds	>80	4.3kg(9.5lbs)	120°

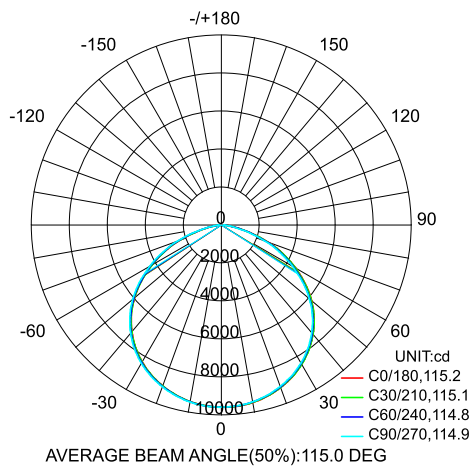
Dimensions(mm)



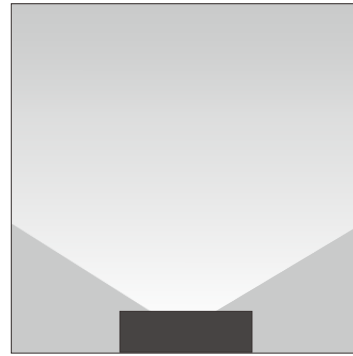
30W/50W

80W/100W

Photometry



120°



120°

Model Options



30W/50W



80W/100W

Installation and use

1

Power	L1	L2	D1
50W	630mm	45mm	10mm
100W	1140mm	45mm	10mm

2

3

Brown(Black) --- L
 Blue(White) --- N
 Green/Yellow --- GND

Packing Spec

Item	Box			Carton		
	Measurement(mm)	Gross weight	Pcs/box	Measurement(mm)	Gross weight	Pcs/box
EP30W/50W-02-G25	L700*W160*H120	3.4kg(7.5lbs)	1	L715*W340*H260	14.4kg(31.8lbs)	4
EP80W/100W-02-G25	L1210*W160*H120	4.8kg(10.6lbs)	1	L1225*W175*H260	10.4kg(22.9lbs)	2