



XP CLIMATE CONTROL LLC
3299 Bamboo Rd. Boone NC 28607
PO Box 432 Blowing Rock N.C. 28605
828-266-2006/866-292-7506
info@xpclimate.com
www.xpclimate.com

EP-MS36HP-1-2-B-(IE)-216-1Z
Explosion Proof Single Zone Mini Split System Heat Pump
Class 1 Division 2 Groups B,C,D (IE)
208-230 Volt, 1 Phase, 60 hertz ~ 36,000 BTU/H

SUBMITTAL DATA



GENERAL FEATURES

- High Efficiency DC Inverter Technology
- Compact and Quiet Design
- Wireless Remote with LCD Display
- Composite Drain Pan
- Owners & Maintenance Manuals Included
- Explosion proof motor and overload protection installed
- Certificate of Conformance to NEC Codes issued
- Low Ambient Cooling down to 0°F (Range 0°F to 115°F)
- Low Ambient Heating down to -13°F (Range -13°F to 75°F)
- Coil (Indoor and Outdoor) Copper Tube / Aluminum Fin
- Blue Colored Fin - 500 Hrs Salt Spray Tested
- Wall-mounted evaporator section
- Refrigerant Type: R32



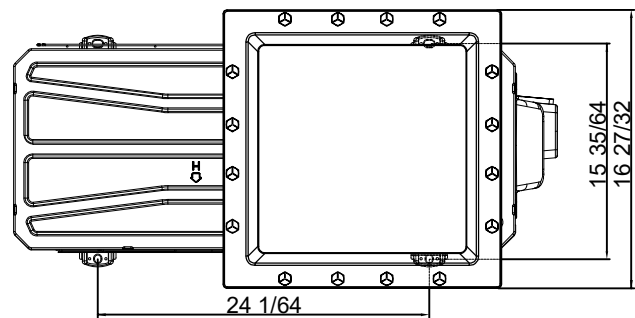
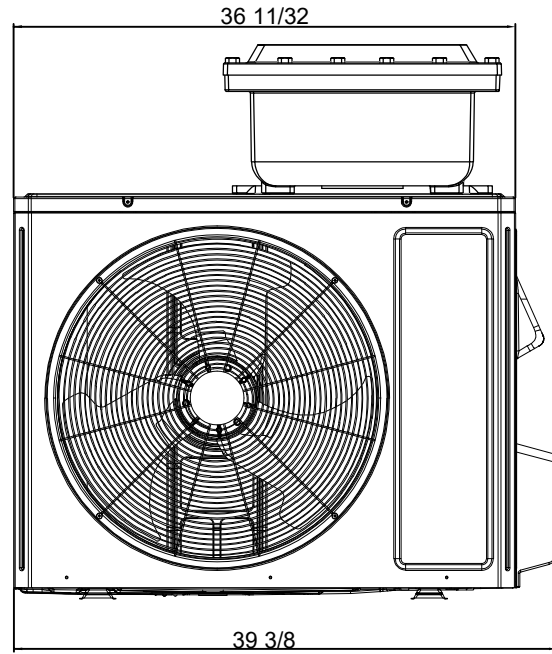
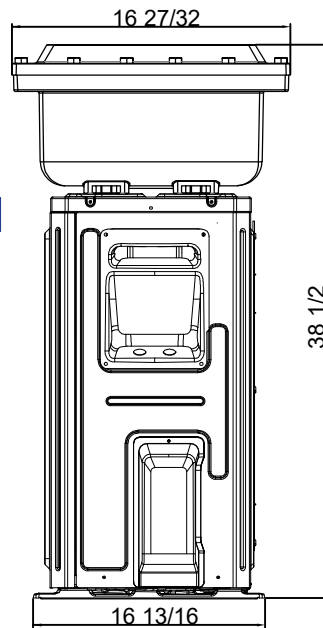
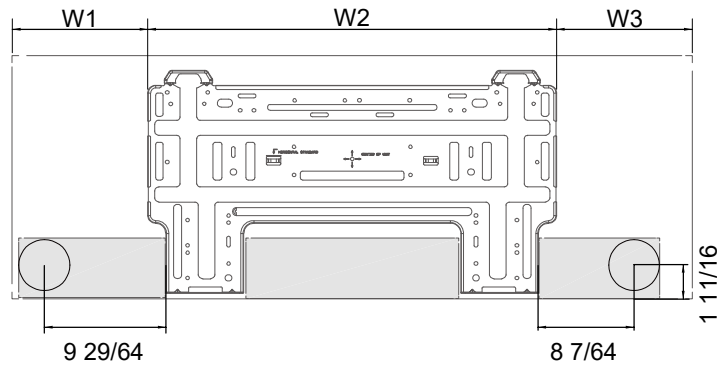
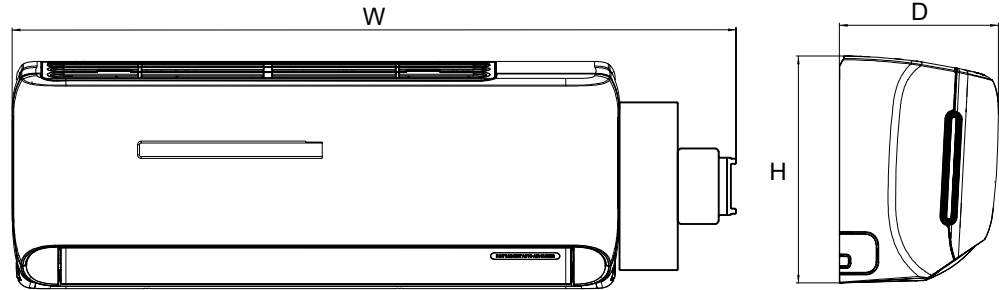
SPECIALIZED EXPLOSION PROOF SYSTEMS

SYSTEM TYPE		HEAT PUMP		FEATURES & FUNCTIONS SUMMARY	
Outdoor Model				Inverter Type	G20
Indoor Model				Ultra Low Frequency Torque Control	Yes
SYSTEM PERFORMANCE					
Cooling Capacity	Min - Max	Btu/h	7,850 - 37,500		
	Rated Capacity @95°F	Btu/h	33,600		
Heating Capacity	Min - Max	Btu/h	10,000 - 37,500		
	Rated Capacity @47°F	Btu/h	34,000		
	Rated Capacity @17°F	Btu/h	27,400		
	Rated Capacity @5°F	Btu/h	24,600		
SEER2		21.0			
EER2		10.6			
HSPF2		8.5			
COP @5°F		1.8			
Cooling Temperature Range		°F	-4 - 122		
Heating Temperature Range		°F	-13 - 75		
Refrigerant Type		R32			
INDOOR UNIT					
Air flow (Min - Max)		CFM	441 - 794		
Sound Pressure Level (Min - Max)		dB(A)	36 - 52		
Dehumidification		pT/hr	7.40		
External Dimensions (W x H x D)		in	49-9/16 x 13-7/64 x 9-11/16		
Net Weight		lbs	46.2		
Gross Weight		lbs	52.8		
OUTDOOR UNIT					
Compressor Type		GREE G20 / SINGLE CYLINDER / 1 - STAGE INVERTER			
Sound Pressure Level		dB(A)	62		
External Dimensions (W x H x D)		in	39-3/8 x 38-1/2 x 16-27/32		
Net Weight		lbs	200.4		
Gross Weight		lbs	211.4		
REFRIGERANT PIPING					
Refrigerant Charge - R32		oz	56.4		
Additional Charge		oz/ft	0.4		
Line Set Size (Liquid - Gas) - Flared Connections		in	1/4 - 5/8		
Pre-Charge Length		ft	25		
Pipe Length (Min - Max)		ft	10 - 131		
Max. Pipe Elevation		ft	82		
ELECTRICAL					
Power Supply		208-230V / 1PH / 60Hz Powered by the Outdoor Unit)			
Voltage Range (Min - Max)		VAC	187 - 253		
Rated Current - Cooling		A	20		
Rated Current - Heating		A	20		
MOCP		A	35		
MCA		A	24		
Main Power Wire Size		AWG	Per Local Code		
Interconnecting Wire Size		AWG	14 / 4		
REMOTE CONTROLLER FUNCTIONS					
Auto Mode		Yes			
Auto Fan		Yes			
Manual Horizontal Swing		Yes			
Auto Swing (Vertical Auto Swing)		Yes			
Clock on Remote Controller		Yes			
Dry Mode		Yes			
Dry Anti-Mildew (X-Fan) Mode		Yes			
Energy Saving Mode		Yes			
Dirty Filter Alert		No			
I Feel Function		Yes			
Lock on Remote Controller		Yes			
Quiet Mode		Yes			
Room Temperature Display		Yes			
Sleep Mode		Yes			
Timer Mode		Yes			
Turbo Mode		Yes			
Display On/Off Control		Yes			
Freeze Guard Mode (46°F)		Yes			
Display On/Off Control		Yes			

INDOOR UNIT

Unit: inch

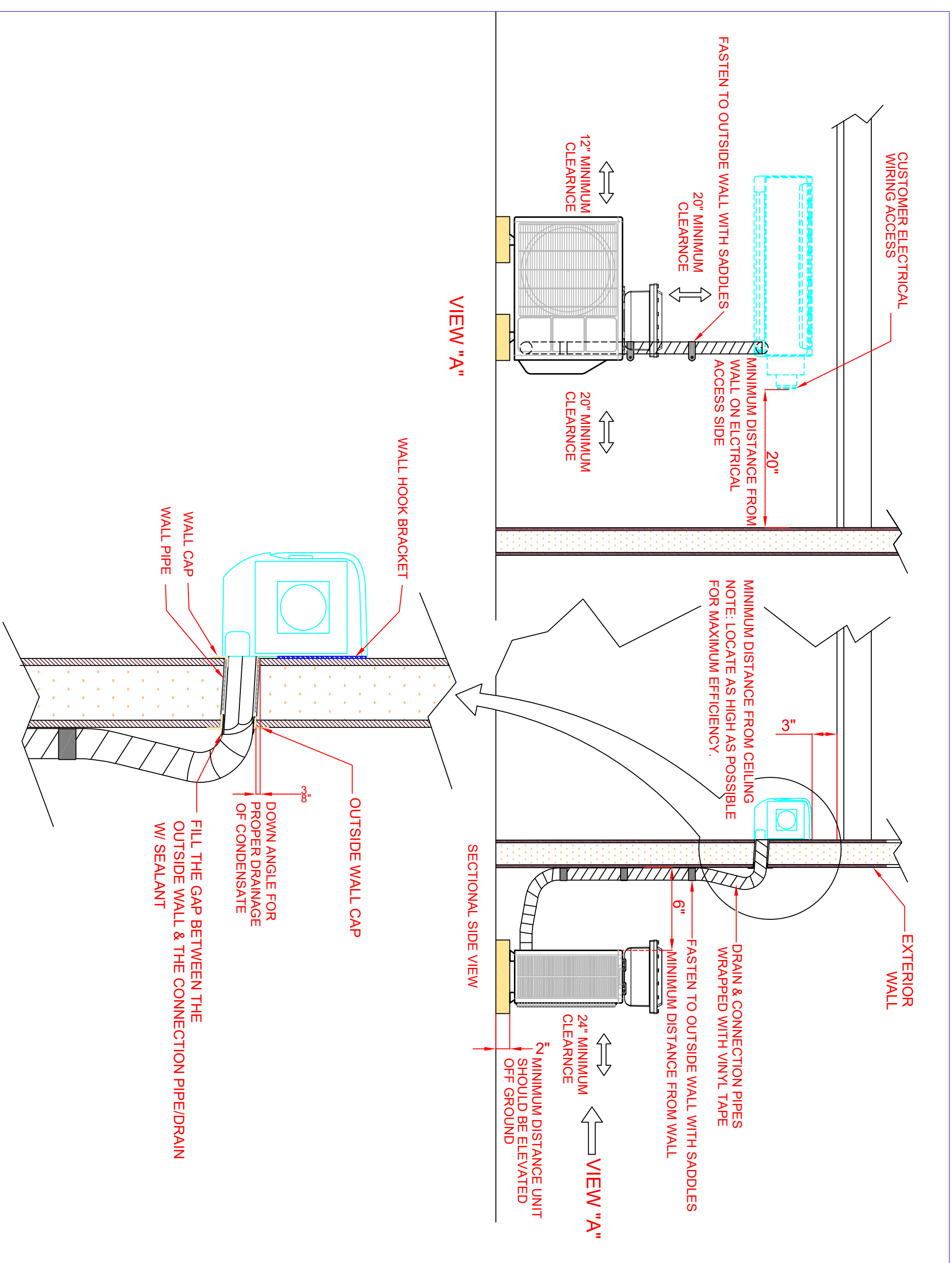
DIMENSIONS	
W	49 9/16
H	13 7/64
D	9 11/16
W1	6 15/64
W2	22 7/64
W3	10 5/32



OUTDOOR UNIT

Unit: inch





DRAWING NAME	
Ductless Mini Split GA (IE)	
DRAWN BY	W/K
DATE	05/22/2026
Scale	NTS
Page 1	
No. Revision/Issue Date	
3299 Bamboo Rd. Boone, NC 28607 PO Box 432-28605	
Toll-free: 866-292-7506 Office: 828-266-2006 E-mail: info@xpclimate.com Website: www.xpclimate.com	