



10178 International Blvd. Ph: (613) 860-5465
 Chatham, ON K7L2A6 Fax: (613) 860-5464

THE DESIGN AND DISCLOSURE CONTAINED IN THIS DRAWING WAS ORIGINATED BY, AND IS THE EXCLUSIVE PROPERTY OF SOLEXY USA, LLC. IT IS FURNISHED FOR VENDOR INFORMATION ONLY AND IS NOT AN AUTHORIZATION -OR- LICENSE TO MAKE THIS CONSTRUCTION OR TO FURNISH THIS INFORMATION TO OTHERS. ALL DRAWINGS MUST BE RETURNED TO SOLEXY USA ON DEMAND. THIS DRAWING IS NOT TO BE REPRODUCED OR COPIED IN ANY FORM WITHOUT THE EXPRESS WRITTEN PERMISSION OF SOLEXY USA, LLC.

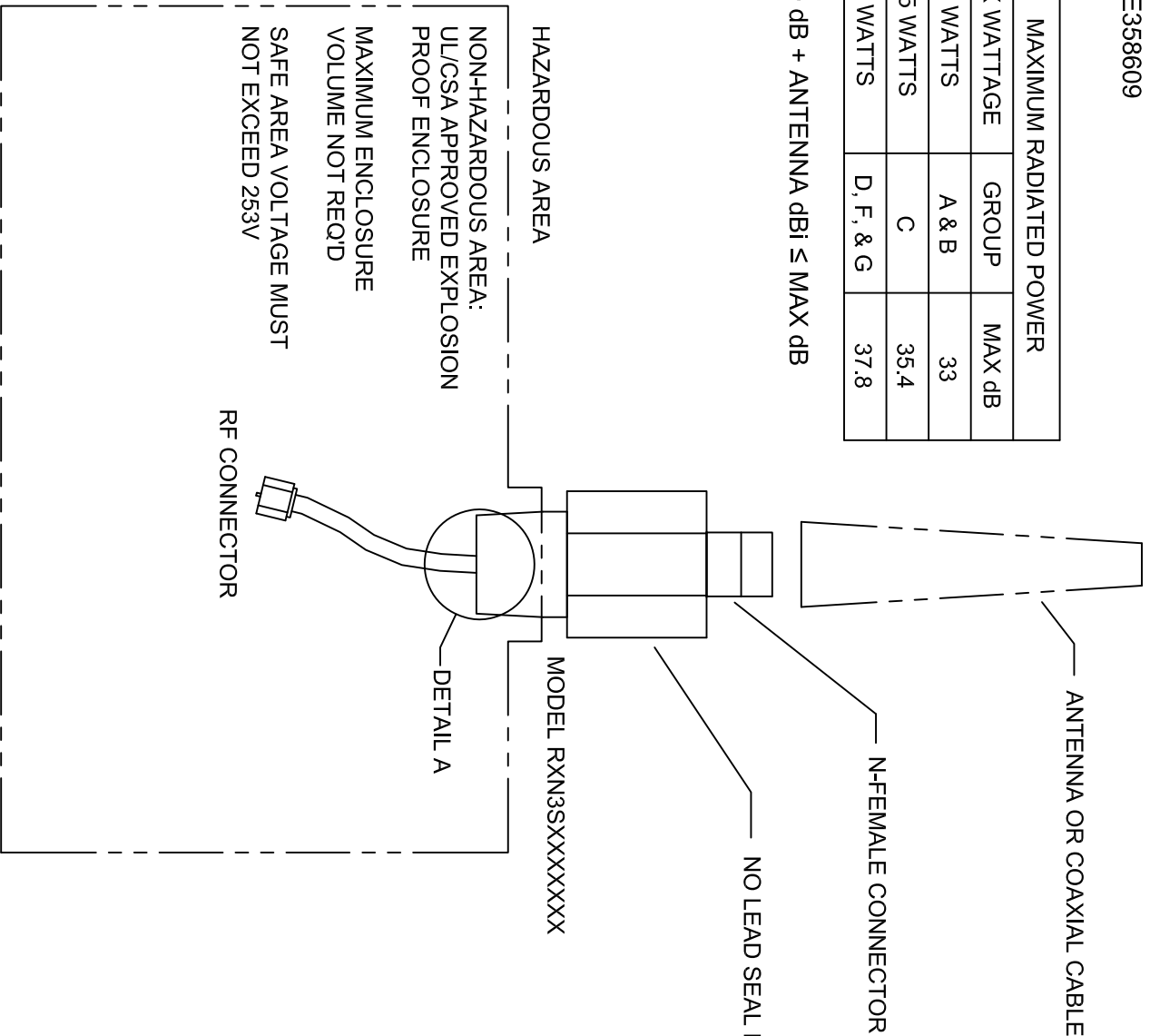
UNLESS OTHERWISE SPECIFIED DIMENSIONS ARE IN INCHES.
 TOLERANCES:
 - ANGLES ±0° 30'
 - DECIMALS
 .XX ±0.01
 .XXX ±0.005
 - COAXIALITY Ⓞ = 0.003
 DO NOT SCALE DRAWINGS

DWN.	RBS	CHECKED	MEP	STATUS	RELEASED	DRAWING NO.	REV.
DATE	05/16/14	DATE	05/16/14	DATE	05/16/14	DC00073	00
NAME	EXPLOSION PROOF ANTENNA FITTING, RXN3S, UL			NAME	CONTROL DRAWING		
EXPLOSION PROOF ANTENNA FITTING, RXN3S, UL							
							SIZE
							A

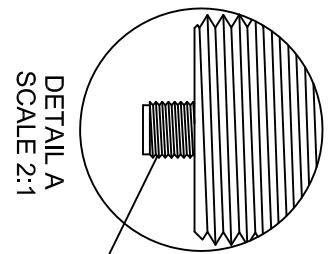
UL File No. E358609

MAXIMUM RADIATED POWER		
MAX WATTAGE	GROUP	MAX dB
2 WATTS	A & B	33
3.5 WATTS	C	35.4
6 WATTS	D, F, & G	37.8

RADIO dB + ANTENNA dBi ≤ MAX dB



CABLE REQUIREMENTS
 MAX. CAPACITANCE: 60 pF/ft
 MAX. INDUCTANCE: 2 uH/ft



OPTIONAL RP-SMA FEMALE CONNECTOR (SEE CABLE REQUIREMENTS ABOVE)

NOTES:

1. STANDARD OPERATING TEMPERATURE: -40°C to +75°C

Rev.	Date	ECN#	Description	Drawn By:	Check By:	Appr'd By: