



Intrinsically Safe Multi-Function Dual-Light™ Headlamp

with Hardhat Clip and Mount

160 Lumens
Dual-Light™

115/60 Lumens
Spotlight

120/60 Lumens
Floodlight

Spot High

Spot Low



Flood High

Flood Low

Dual



This 3 AAA Intrinsically Safe Dual-Light™ Headlamp w/Hard Hat Clip & Mount is cETLus, ATEX, INMETRO and IECEx listed Intrinsically Safe. This headlamp features a multi-position tilt head design and includes an integrated Stainless Steel Clip and adhesive hard hat mounting bracket for hands-free operation. The dual top mounted switches provide user-selectable high or low-brightness spotlight, high or low-brightness floodlight operation and our exclusive Dual-Light design...the ability to turn on both the spotlight and the floodlight at the same time for maximum user safety and lighting versatility. Power comes from 3 AAA premium batteries (included).

INTRINSICALLY SAFE



- cETLus, ATEX, INMETRO and IECEx listed Intrinsically Safe
- Integrated Stainless Steel Clip attaches to hard hat mounting bracket (included)
- 5 modes: high/low spotlight, high/low floodlight & Dual-Light™
- Powered by 3 AAA batteries (included)

XPP 5454GC

Intrinsically Safe Multi-Function Dual-Light™ Headlamp with Hardhat Clip and Mount



SPECIFICATIONS

- Lumens: high spotlight-115, low spotlight-60, high floodlight-120, low floodlight-60, dual-light-160
- Run-time: high spotlight-5 hrs, low spotlight-16.25 hrs, high floodlight-5.25 hrs, low floodlight-16.75 hrs, dual-light-3.5 hrs
- Beam distance: 94 meters
- Water / Dust rating: IP-67
- Drop rating: 2 meters
- Width: 2.6in, length: 2.1in, depth: 1.8in, weight: 3.4oz

FEATURES

- cETLus, ATEX, INMETRO and IECEx listed Intrinsically Safe
- CREE® LED technology – 50,000 + hours LED life
- 5 modes: high/low spotlight, high/low floodlight & Dual-Light™
- Integrated Stainless Steel Clip attaches to hard hat mounting bracket (included)
- Focused spotlight beam for distance illumination
- Unfocused wide-beam floodlight for close-up illumination
- Dual-light (any spotlight & floodlight mode at same time) for maximum versatility
- Engineered polymer housing
- Dual switches located on top of light
- Adjustable ratchet tilt head
- Dustproof / Waterproof
- Impact & chemical resistant
- Powered by 3 AAA batteries (included)
- Limited Lifetime Warranty

FL 1 STANDARD	DUAL-LIGHT	HIGH	LOW
	160 LUMENS	115 LUMENS	60 LUMENS
	3h 30min	5h	16h 15min
	94m	82m	60m
	1711cd	1668cd	882cd
	2m		
	1m		

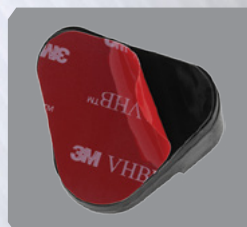


SAFETY RATING

cETLus, ATEX, INMETRO, and IECEx listed Intrinsically Safe.

INCLUDED

- Headlamp w/ Hard Hat Clip
- 3 Premium alkaline AAA batteries



Industrial strength PSA backing



Fits most hard hats



Integrated stainless steel clip



Tool-less secure pressure fit mounting

Patent 7,738,229

Model XPP-5454GC UPC 0 17398

80450 9