

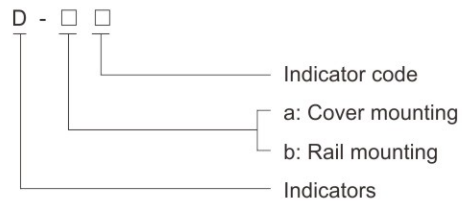
Components for BZC8050 Control Stations BD8050 Series Indicators



- ◆ Explosion protection to
 - CENELEC
 - IEC
 - NEC
- ◆ Can be used in
 - Zone 1 and Zone 2
 - Zone 21 and Zone 22
 - Class I, Zone 1 and Zone 2
 - Class I, Division 2, Groups A , B, C, D
- ◆ Available in
 - red
 - green
 - yellow
 - blue
 - white
- ◆ Two mounting types
 - cover mounting
 - rail mounting

■ Catalogue number logic

BD8050(D for short)



Zones 1&2; 21&22

Components for BZC8050 Control Stations BD8050 Series Indicators

Selection table

| Version | Voltage | Schematic diagram | Colour | Code | Ordering code | Weight (kg) |
|--|---|---|--------|---------------|---------------|-------------|
|  a: Cover mounting | Rated voltage: AC 230V...AC 415V Voltage range: -10%...+6% Frequency: 50Hz...60Hz |  | Red | Ra | 40099A/40099B | 0.05 |
| | | | Green | Ga | 40100A/40100B | |
| | | | Yellow | Ya | 40101A/40101B | |
| | | | Blue | Ba | 40166A/40166B | |
| | | | White | Wa | 40102A/40102B | |
| | Rated voltage: AC/DC 48V...110V Voltage range: -10%...+6% Frequency: 0Hz...60Hz |  | Red | Rb | 40103A/40103B | 0.05 |
| | | | Green | Gb | 40104A/40104B | |
| | | | Yellow | Yb | 40105A/40105B | |
| | | | Blue | Bb | 40167A/40167B | |
| | Rated voltage: AC/DC 12V...36V Voltage range: -10%...+6% Frequency: 0Hz...60Hz |  | Red | Rc | 40107A/40107B | 0.05 |
| | | | Green | Gc | 40108A/40108B | |
| | | | Yellow | Yc | 40109A/40109B | |
| Blue | | | Bc | 40168A/40168B | | |
| White | | | Wc | 40110A/40110B | | |
|  b: Rail mounting | Rated voltage: DC 220V, 380V Voltage range: -10%...+6% |  | Red | Rd | 40111A/40111B | 0.05 |
| | | | Green | Gd | 40112A/40113B | |
| | | | Yellow | Yd | 40113A/40113B | |
| | | | Blue | Bd | 40169A/40169B | |
| | | | White | Wd | 40114A/40114B | |
|  a: Cover mounting | | | Red | a | 40115A | 0.05 |
| | | | Green | b | 40116A | |
| | | | Yellow | c | 40117A | |
| | | | White | d | 40118A | |
| | | | Blue | e | 40170A | |
|  b: Rail mounting | | | Red | a | 40115B | 0.05 |
| | | | Green | b | 40116B | |
| | | | Yellow | c | 40117B | |
| | | | White | d | 40118B | |
| | | | Blue | e | 40170B | |



Components for BZC8050 Control Stations BD8050 Series Indicators

Technical data

Indicators **BD8050**

Explosion protection

Global (IECEX)

Gas

Europe (ATEX)

Gas

Certificates

Conformity to standards

Rated voltage

Rated current

Frequency

Rated output wattage

Service life

Ambient temperature

Colour

Lamp

Enclosure material

Terminal

Indicator cover material

IECEX CQM 11.0012U

Ex d e IIC Gb

LCIE 09 ATEX 3098U

⊕ II 2 G Ex d e IIC Gb

IECEX; ATEX; CU-TR

EN 60079-0, EN 60079-1, EN 60079-7

IEC 60079-0, IEC 60079-1, IEC 60079-7

12V...415V AC/DC (-10%...+6%)

Max.15mA

0Hz...60Hz

Max.1W

10⁵ hours

-20°C~+70°C(ATEX), -20°C~+80°C(IECEX)

Red, green, yellow, blue, white

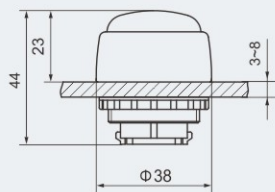
LED

Polyamide (PA66)

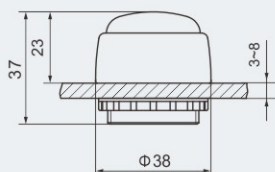
Suitable for 2.5mm² cable

PC

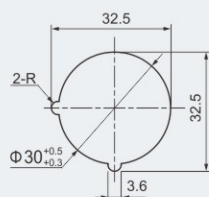
Dimension drawings (all dimensions in mm) - subject to alteration



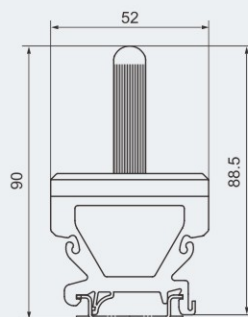
a: Cover mounting



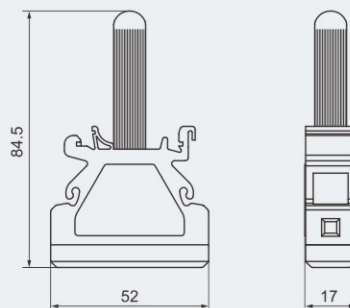
b: Rail mounting
Indicator cover



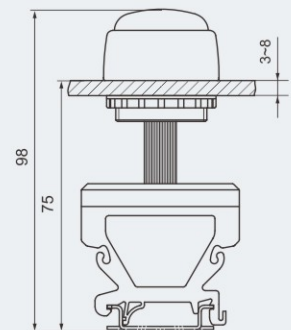
Mounting hole



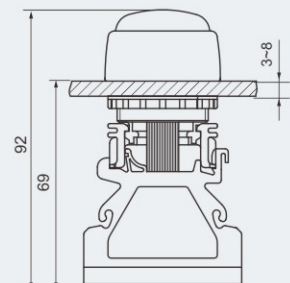
Indicator
(rail mounting)



Indicator
(cover mounting)



Rail mounting



Cover mounting