

# IFC300/400 Data Logger Interface Quick Start Guide



## Package Contents

### IFC300/400

- IFC300/400 Docking Station
- USB to Mini-USB Cable
- Data Logger Software on USB Flash Drive
- Quick Installation Guide

**Model No. IFC300/400**

For XP SP3/Vista/Windows 7/Windows 8

**IMPORTANT:** Do not connect the IFC300/400 to your PC until instructed to do so or the setup will not work.

# 1 Install Software and Setup USB Data Logger Interface

**A** Insert the MadgeTech Data Logger Software USB Flash Drive into an available USB port on your PC. Click the **Start** menu and choose **Computer** or **My Computer**. Browse to the Removable Disk drive corresponding to the USB port you selected.

For Windows 7 users, a dialog box may appear with a list of options. Select "Open Folder to View files". If you are not prompted, click the **Start** menu and choose **Computer** or **My Computer** and browse to the Removable Disk drive corresponding to the USB port you selected.

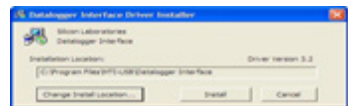


Once you locate the contents of the USB flash drive, click on the **autorun** program file. A set-up screen will display with options as shown above.

**B** Click on the **MadgeTech Software** link on the USB Contents screen to start the installation of the Data Logger Software. The **Install MadgeTech Software** window will appear, click on the **Install MadgeTech Software** link. Follow the on screen prompts to complete the installation. Click Back to MadgeTech Contents when completed.



**C** The default directory is C:\Program Files\MTI-USB\Datalogger Interface. If you choose to change the location of the install directory click on the **Change Install Location** button. Once you have the install location set click on the **Install** button to start the installation.



To install the drivers for the IFC300/400, click on the **Drivers and Third Party Tools** link on the CD Contents screen. In the next window click on **Install USB Interface Drivers**. A window will appear prompting for a directory and to start the installation.

# 2

## Connect the USB Data Logger Interface

**A** Remove the Warning Label to expose the USB connector. Connect one end of the USB cable to the USB port of the IFC300/400.

**WARNING:** Install driver before connecting this device.

**B** Connect the other end to a USB port on your PC. When the IFC300/400 is plugged in, a **New Hardware Found** message will appear in the lower right corner of your screen. The new drivers will automatically configure themselves for use with the Interface cable. A message will then appear that the new hardware is installed and ready to use.

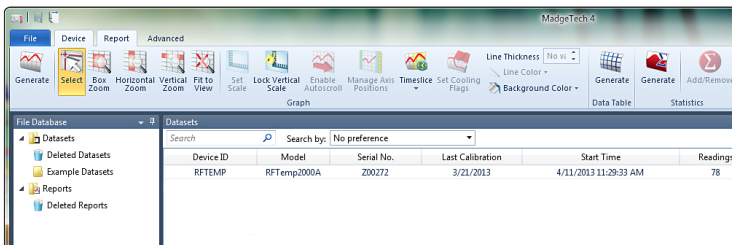


The installation of the USB data logger interface is complete.

# 3

## Test the Data Logger Interface Operation

- A** To verify that the USB Interface drivers are installed properly, check to ensure the Data Logger Software can recognize a device.
- B** When the interface cable is connected to the PC the blue LED power indicator light should be on. If the indicator light is **not** on, unplug the interface cable, wait 5 seconds and plug it back into the PC.
- C** Start the MadgeTech Data Logger Software. (If necessary, see the software manual for additional information on the software)
- D** Your device(s) will appear in the list displayed, select your device in this list and choose your desired start method.



## **Additional Information**

For additional information or troubleshooting assistance, refer to the User Guide on the Data Logger Software USB Flash Drive, email [support@madgetech.com](mailto:support@madgetech.com) or call (603) 456-2011.

### **MadgeTech, Inc.**

6 Warner Road • Warner, NH 03278  
Phone 603.456.2011 • Fax 603.456.2012  
[www.madgetech.com](http://www.madgetech.com) • [info@madgetech.com](mailto:info@madgetech.com)